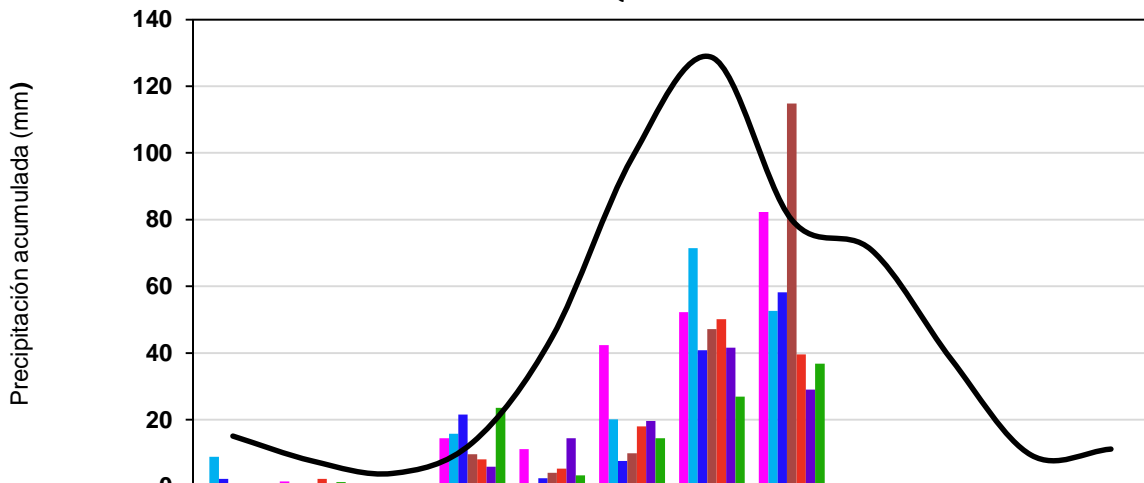


**CENTRO HIDROMETEOROLÓGICO
 REPORTE DE PRECIPITACIÓN ACUMULADA
 AL DÍA 04 DE SEPTIEMBRE DEL 2022
 ZONA METROPOLITANA DE QUERÉTARO**



| | Ene | Feb | Mar | Abr | May | Jun | Jul | Ago | Sep | Oct | Nov | Dic |
|----------------------------------|------|-----|-----|------|------|------|-------|-------|------|------|-----|------|
| Santa Rosa | 0.4 | 1.5 | 0.0 | 14.5 | 11.2 | 42.4 | 52.3 | 82.3 | 0.0 | 0.0 | 0.0 | 0.0 |
| UTEQ | 8.9 | 1.0 | 0.0 | 15.8 | 0.5 | 20.1 | 71.4 | 52.6 | 0.0 | 0.0 | 0.0 | 0.0 |
| Plaza Altamira | 2.3 | 0.8 | 0.0 | 21.6 | 2.5 | 7.6 | 40.8 | 58.2 | 0.0 | 0.0 | 0.0 | 0.0 |
| Jurica | 0.0 | 0.0 | 0.0 | 9.7 | 4.1 | 9.9 | 47.2 | 114.8 | 0.0 | 0.0 | 0.0 | 0.0 |
| Of. Centrales | 0.4 | 2.3 | 0.0 | 8.1 | 5.3 | 18.0 | 50.1 | 39.6 | 0.0 | 0.0 | 0.0 | 0.0 |
| Pueblo Nuevo | 0.0 | 0.0 | 0.0 | 5.9 | 14.5 | 19.6 | 41.6 | 29.0 | 0.0 | 0.0 | 0.0 | 0.0 |
| Centro de Congresos | 0.0 | 1.3 | 0.0 | 23.6 | 3.3 | 14.5 | 26.9 | 36.8 | 0.0 | 0.0 | 0.0 | 0.0 |
| Media Histórica 1971-2000 | 15.1 | 7.6 | 3.9 | 13.1 | 44.8 | 98.5 | 128.7 | 80.0 | 70.9 | 38.1 | 9.4 | 11.2 |

